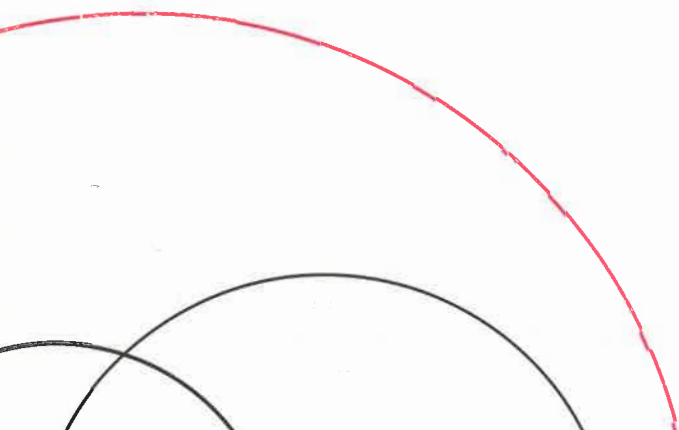




50
years
1964-2014

permanent art
collection

president's message



We live in fast-paced times, characterized by instant access to information anytime, anywhere and a confluence of visual stimulation. Because the flow of information is constant, very little of it ultimately takes root or gives us pause. Fifty years into our College's history, while we nimbly navigate the changes to the way information and learning flows, we also embrace those things which will never change. Our commitment to Visual Art and our legacy of enhancing the Arts in central Alberta is stronger than ever.

Our Permanent Art Collection exemplifies RDC's contribution as an institution to the strong cultural fabric of our region. As a lasting and ongoing investment in the Arts, the Permanent Art Collection is a stalwart body of work that enriches learning through access to major works of historical and contemporary Art by nationally and internationally known artists.

The Board of Governors' commitment in 1975 to establish the Collection was visionary and we are proud that over the decades it has grown to be widely recognized as one of the strongest college art collections in western Canada. The College wishes to acknowledge the generosity of donors over the years, the expertise of the Permanent Art Collection Acquisitions Sub-Committee, and the ongoing support of the City of Red Deer and the Red Deer Museum & Art Gallery.

The prints, drawings, paintings, photographs, sculpture, and ceramics that make up the Red Deer College Permanent Art Collection are an important part of making our institution an exceptional community learning space that is stimulating and enriching for everyone. We are confident that the Collection will continue to spark lasting and meaningful dialogue that furthers learning and encourages deeper appreciation of Visual Art.

Joel Ward,
President and CEO, RDC

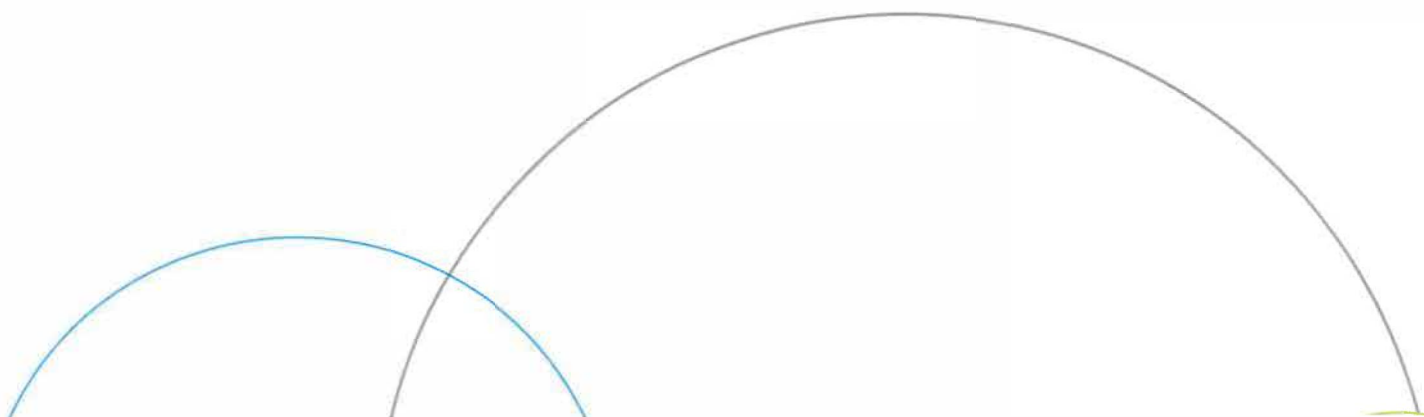


The Red Deer College Permanent Art Collection began as a College Board of Governors initiative in 1975. The Acquisitions Committee embraced the mandate to build a permanent art collection which would have enduring value for the Red Deer community. This collection provides RDC students the opportunity to directly study and experience artwork of provincially, nationally, and internationally recognized artists.

For visual art students, the art collection offers an opportunity to research and study specific works by critically acclaimed artists. The collection houses works created by Old Masters, Modern Masters, Contemporary Masters, national and international artists and more recently, exceptional alumni artworks. It allows our students to better understand the technical, emotional, and formative aspects of the work, and to apply that knowledge to the development of their own studio practice, whether it is drawing, printmaking, painting, sculpture, or ceramics. The art collection animates and solidifies the lessons of art history by providing an intellectual framework and social context for art within its time period.

The RDC Permanent Art Collection is widely recognized as being one of the strongest college art collections in Canada and includes nearly eight hundred works of art. The art collection enriches student learning through first-hand experiences with such historically recognized artists as: William Blake, Jack Bush, Anthony Caro, Honoré Daumier, Jim Dine, Albrecht Durer, Les Graff, William Hogarth, Henry Moore, Marion Nicoll, Claes Oldenburg, Evan Penny, Walter J. Phillips, Giovanni Piranesi, Larry Poons, Robert Rauschenberg, James McNeill Whistler, and many other notables.

curator's message





Diane Arbus {1923-1971}

Teenage Couple on Hudson Street, NYC

1963

Photo

Early in her career, Arbus earned her living as a Vogue fashion photographer and, later, her artistic fame was achieved through her personal photographic work, which documented the bizarre aspects of life on the fringes of American society. *Teenage Couple On Hudson Street* is an interesting example of her work showing two adolescents wearing world-weary faces that belie their age. The image in the Red Deer College Collection is an original photo printed by Arbus herself, making it a rare version of the print.



Jack Bush { 1909-1977 }

Untitled

1960

Acrylic on Canvas

Considered by New York critic Clement Greenberg to be as important as any of the New York School of Abstract Expressionists, Jack Bush was one of the founders of Painters Eleven, a Toronto based group in the early 1950s. Bush joined William Ronald in forming the group and together they worked to promote abstract painting in Canada. In this painting, Bush explores colour and abstract shapes on an unprimed canvas, reflecting the Abstract Surrealists idea of intuitive form through a reductive process. In his exploration of Abstractionism, Bush was influenced by artist such as Adolph Gottleib and possibly the Surrealist work of Joan Miro.





Alex Colville {b. 1920}

Sleeper

1975

Serigraph

Alex Colville is a Canadian maritime artist who helped form the Canadian Magic Realist Movement. After graduating from Mount Allison University in 1942, Colville became one of Canada's most prominent war artists and was present for the Canadian Army's landing on Juno Beach on D-Day. Following the war, Colville taught painting at Mount Allison University. Many of his paintings portray complex themes of loneliness and isolation and his subjects are captured in fundamental human situations, which are sometimes simple, and at other times complex. *Sleeper* is a simple situation depicting his wife returning to bed.

Nicholas de Grandmaison { 1892-1978 }

Eagle Plume #71

1948

Oil on Canvas

Nicholas de Grandmaison, coming from French and Russian ancestry, was born in Russia and received his artistic training in London, England and Paris, France. In 1923, he immigrated to Winnipeg, Manitoba and became well known for his etchings and chalk pastel drawings of children. In 1933, he made Banff, Alberta his home and began documenting the Plains Indians of Alberta. *Eagle Plume #71* is unusual in that it is oil on canvas, and de Grandmaison is known more for his pastel portraits. His work is represented in the National Gallery of Canada and his honours include an associate membership in the Royal Canadian Academy and the Order of Canada.





Jim Dine {b. 1938}

Worn Paintbrushes

1973

Intaglio

Jim Dine, along with Andy Warhol, Roy Lichtenstein, Edward Ruscha, and others, are an important member of the American Pop Art Movement of the 1960s and 1970s. Working in New York, Dine first came to prominence with his Happenings, a sort of proto-performance art that conflicted with the large-scale expressionistic paintings of the time. Dine produced work featuring objects from everyday life and this intaglio print, from a series titled *Worn Paintbrushes*, and contains his personal history and experience, making it a sort of self-portrait. *Worn Paintbrushes* is an excellent example of both Pop Art and an intaglio print, which is a rich impression, and reveals the full potential of combined etching and engraving.

Albrecht Durer {1471-1528}

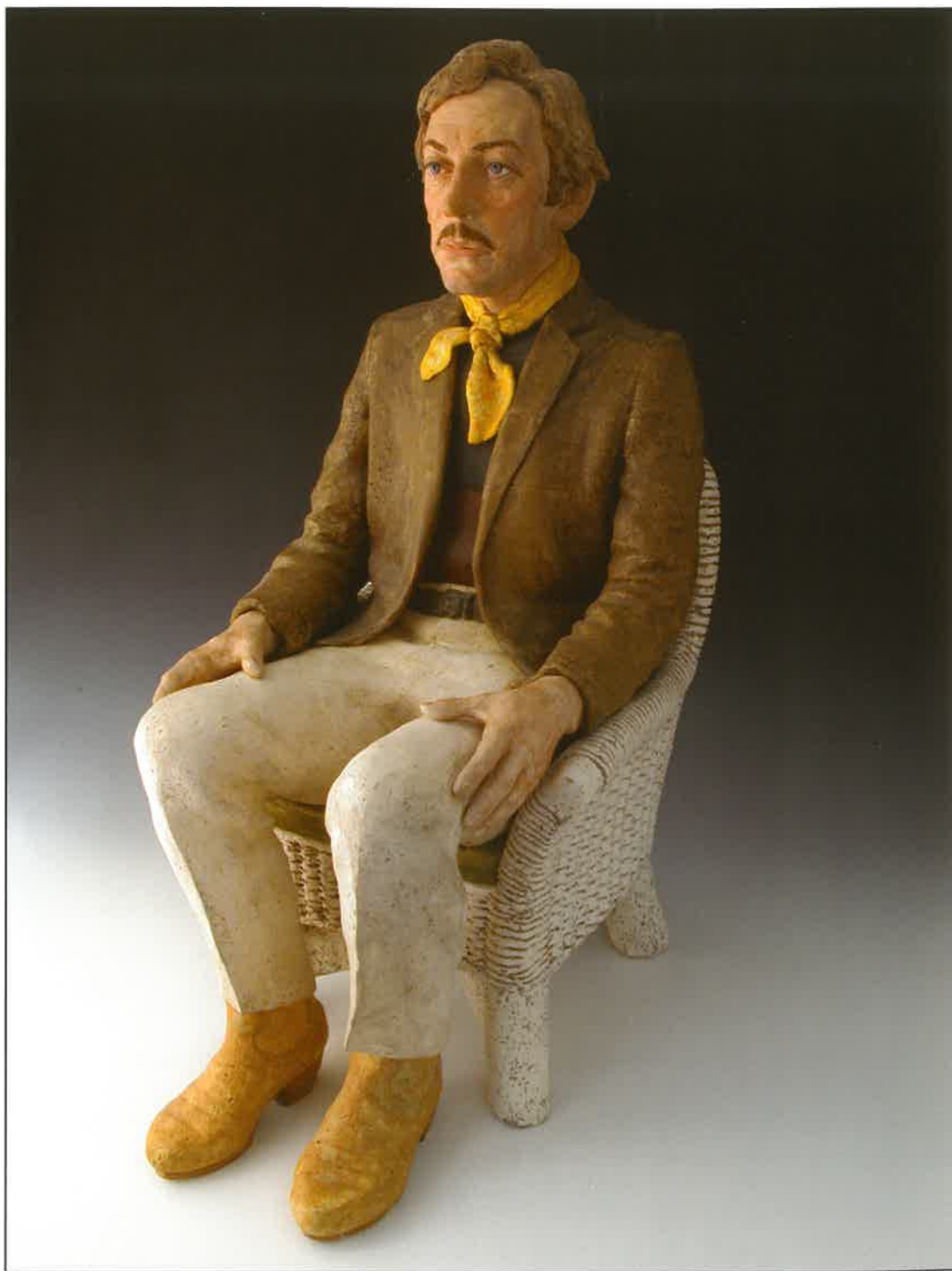
Christ Bearing the Cross

1512

Engraving

Truly an iconic artist, Albrecht Dürer was one of the most important painters and printmakers of the German Northern Renaissance. Like Leonardo DaVinci he saw divinity in nature and in all of its minute details. Born in Nuremberg, he travelled to Italy several times and was greatly influenced by the Italian Renaissance and in turn, his vivid and expressive images were influential throughout Europe. This particular image is from a series of sixteen images called *The Engraved Passion*, and it captures Christ in a moment of calm amid the tumult, gesturing toward His mother Mary and St. Veronica, seen holding a cloth. The image demonstrates Durer's masterful technical skill in cross-hatching while engraving a metal plate.





Joe Fafard {b. 1942}

Donald Sutherland

1982

Ceramic

Joe Fafard is a Saskatchewan artist and one of Canada's most important sculptors. Early in his career he became known as a portrait sculptor working in clay. In 1985, he switched from clay to bronze as his chief medium and he opened his own foundry in Pense, Saskatchewan. *Donald Sutherland* comes from the transitional time period between clay and bronze, and the work is quite magnificent his expressive portrayal of the Canadian actor, as well as in the beauty of hand painted surfaces. Fafard has been recognized for his outstanding career in art and was named an Officer of the Order of Canada in 1981.

Francisco Goya { 1746-1828 }

Cruel Folly

c. 1815-24

Etching and aquatint

One of the greatest painters and printmakers of all time, Goya was both one of the leading visionary Romantics as well as a modern documentarist. He documented the cruel court life of Carlos IV with a brutal realism. *Cruel Folly* is from a series of intaglio works titled *Los Disparates*, created between 1815 and 1824 and was not published in his lifetime. The series is a satirical comment on the political and social conditions of his time. Goya's work anticipates modernism, and in some respects his work is considered to be the beginning of modernism just as he is both an Old Master and one of the first Modern Masters.





Les Graff {b. 1936}

Roadside Entanglement #14

2002

Oil on Canvas

Les Graff has been a working artist in Alberta for more than 50 years. After graduating from the Alberta College of Art (now known as ACAD) in 1959, Graff worked as the Director of Alberta Culture for 31 years and all the while he maintained his painting practice. Graff is primarily a landscape painter and his genre of landscape art is mixed with abstract tones and imagery. *Roadside Entanglement* is part of a series made up of thirteen oil studies and one painting on canvas and grew out of one sketchbook study.

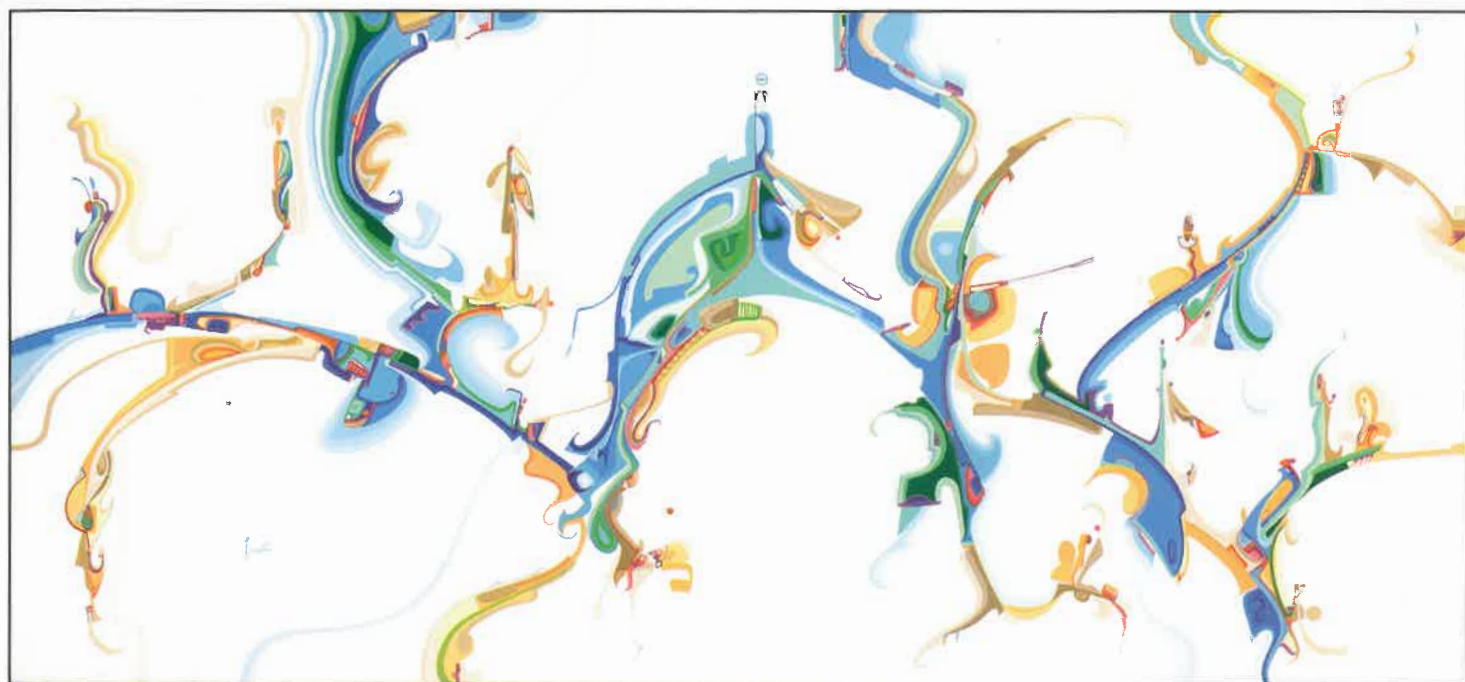
Alex Janvier {b. 1913}

Untitled

1978

Acrylic on Canvas

Born on the Le Goff Reserve near Cold Lake, Alberta, Alex Janvier is one of Canada's most important contemporary aboriginal artists. At the age of eight, he was sent to the Blue Quills Indian Residential School near St. Paul, Alberta and it was here he was first given tools to paint. Eventually Janvier would attend the Alberta College of Art and then teach at the University of Alberta. Janvier is known for his intricate designs based on native as well as contemporary formal elements and Surrealist artist Jean Miro. Wassily Kandinsky and Paul Klee also influence his work.





Jasper Johns {b. 1933}

Ballantine Ale

1974

Lithograph

Perhaps best known for his painting *Flag*, Jasper Johns can be described as a Neo-Dadaist even though he uses some of the same iconography used in Pop Art. Early works were composed using simple schema such as flags, maps, targets, letters and numbers. Johns' treatment of the surface is often lush and painterly, and he is known for incorporating such media as encaustic and plaster relief in his paintings. In additions to his paintings and collage pieces, Johns was an accomplished printmaker and his *Ballantine Ale* print is one of his great iconic images.

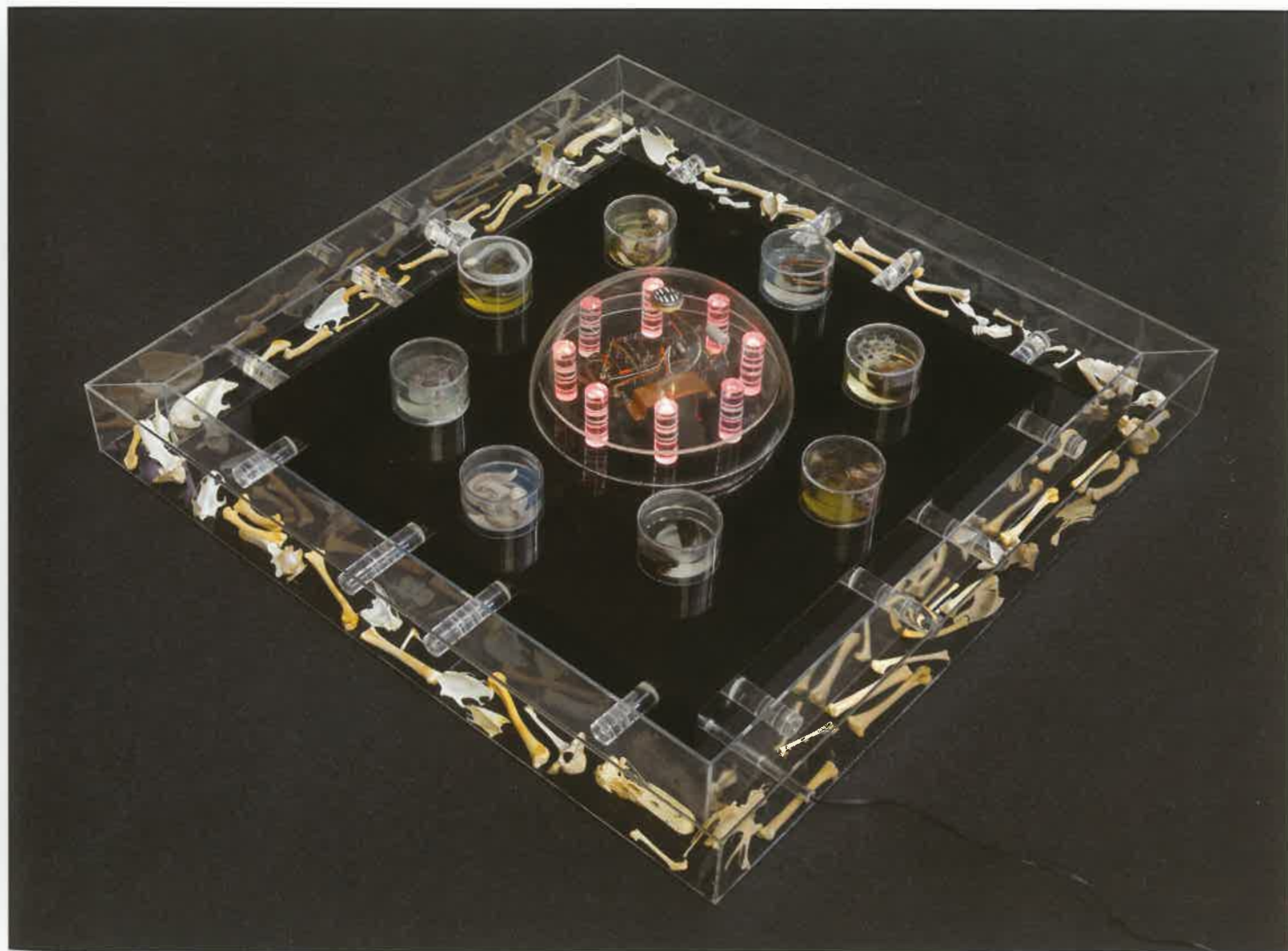
Ron Kostyniuk {b. 1941}

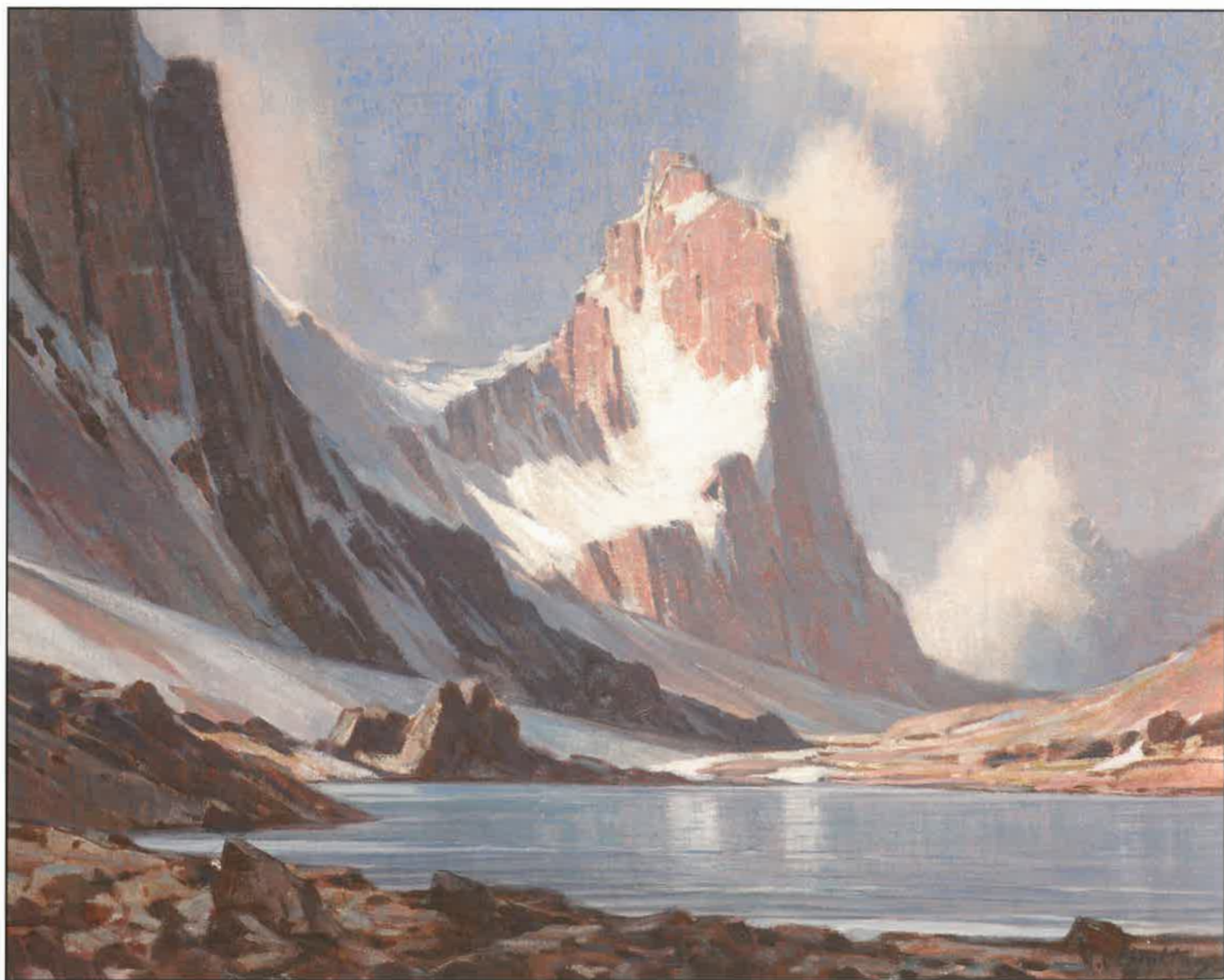
Eco Biome #1

1971

Mixed Media (dead organic matter, bones, plexiglass, and electrical system)

Ron Kostyniuk, born in Wakaw, Saskatchewan, is an Alberta sculptor and has taught at the University of Calgary since 1971. His sculptural work explores structures found in nature, and also follows the guiding principles of Constructivism. Kostyniuk has both a Masters of Fine Art and a Masters of Science in Biology. The sculpture *Eco Biome #1*, from 1971, is indicative of his earlier work and interest in biology, technology, and interaction. The sculpture, a table top piece, lights up and has sensors that turn the lights on and off depending on the volume of sound in the room.





A.C. Leighton { 1931-1965 }

Crowfoot Pass

c. 1930

Oil on Canvas

In 1924, A.C. Leighton was hired by the Canadian Pacific Company to paint scenic views of Canada and specifically, the Canadian Rockies. This area, Banff and the Kananaskis, would become the focal point of what Leighton became known for, a great landscape watercolourist in the tradition of British watercolour painters J.M.W. Turner, Thomas Girtin and John Cotman. He was also a great painter in oils, and *Crowfoot Pass* is a strong example of his skills in this medium. He and his family settled in Millarville, now the home of the Leighton Art Centre.

Robert F.M. McInnis {b. 1942}

Francoise in Beige Bra

1999

Oil on Canvas

Robert F.M. McInnis is a unique and strong voice in the history of Canadian figure painting, though he also has achieved renown as a landscape painter. Born in Saint John, New Brunswick, McInnis has made it a point to live all across Canada, from coast to coast – British Columbia, Alberta, Ontario, Quebec, and now settled in Winnipeg, Manitoba. This experience has provided McInnis the opportunity to know all of Canada both regionally and from a national perspective. He has painted portraits of Canadians such as Margaret Atwood, Peter Pocklington, Maureen McTeer and Chief Justice Beverly McLachlin, among others.





David More {b. 1947}

Garden Ceremony with Reflection #1

1985

Mixed Media on Paper

David More was born in Aberdeen, Scotland and his family moved to Canada the following year eventually settling in Red Deer, Alberta. Primarily a landscape and figurative painter, with an emphasis on environmental and social concerns, More's work is represented in many collections in Canada and abroad. He has been commissioned to create over a dozen public historical murals in a variety of Canadian centres. As an illustrator/author he has been involved in the design, production and publication of many books. *Garden Ceremony with Reflection #1* is part of a series that More has been working on since 1975.

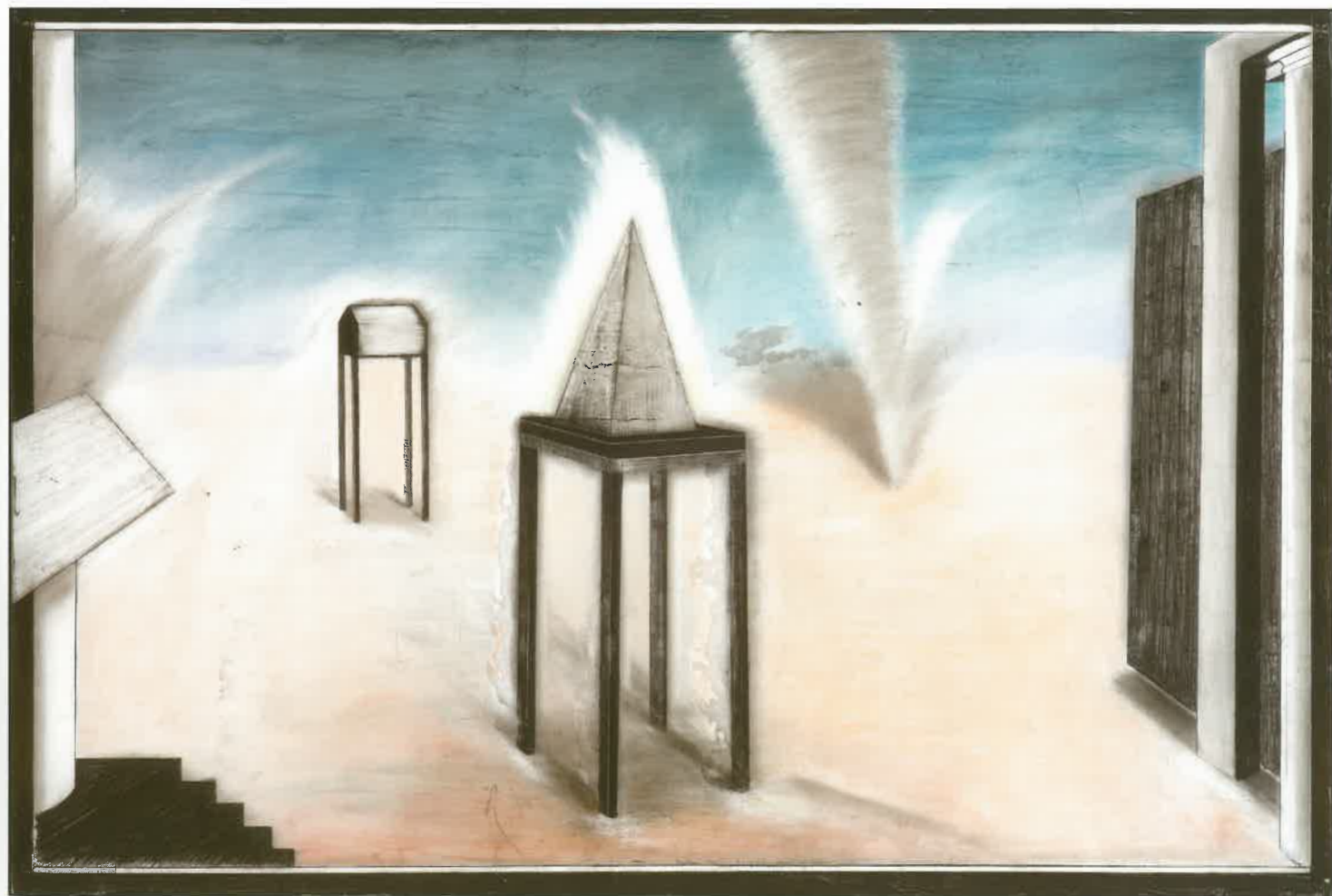
Greg Murdock {b. 1954}

Eccentric Aura in an Aeolian Landscape

1986

Mixed Media on Board

Born in Saskatoon, Saskatchewan, Greg Murdock decided he would pursue a career as an artist after visiting the Prado and the Louvre museums on a high school trip to Europe. He studied art at the University of Saskatoon, Mexico City, and Emily Carr College of Art and Design. Murdock credits his travels and varied educational experiences with forming his artistic development and also draws inspiration from artists J.M.W. Turner, Cy Twombly, Donald Judd, and Jasper Johns. *Eccentric Aura in an Aeolian Landscape* is a work that typified Murdock's interest in creating surreal, dreamlike paintings that seem to exist in a weightless otherworld.





Shady Side - Prince Rupert, B.C.

W. H. H. H.

Walter J. Phillips {1884-1963}

Sharp's Dock, Pender Harbour

1952

Colour Woodcut

British-born, Walter J. Phillips is one of Canada's most famous watercolour painters and most acclaimed woodblock printmakers. He studied woodblock printing in Japan with Japanese masters and translated that skill to his own personal Canadian imagery. *Sharp's Dock, Pender Harbour* demonstrates his masterful skill in the handling of subtle changes in value and atmospheric effect. The subject for the print is his young son. Phillips is one the founders of the Alberta Society of Artists, in addition to helping develop the Banff School of Fine Arts (now Banff Centre) programing, and, previously teaching at the Southern Alberta Institute of Technology (now ACAD).

Jacqueline Stehelin {b. 1939}

Garden Scene #4

1996

Oil on Canvas

Jacqueline Stehelin lives and paints in Buffalo Lake, Alberta, where she shares her studio with husband, Les Graff. Stehelin paints what she knows, objects and people in her life. The *Garden Scene* is an excellent example of this. Part of a series, this painting grew out of a selection of photographs of children all attending a family wedding (held in a garden), but developed into a tableau like composition where each of the figures seems to be in a separate space – unrelated to each other though all in the same space.





Jim Westergard {b. 1939}

Bag with a View

1970

Prisma Colour on Paper

Jim Westergard taught printmaking and drawing at Red Deer College from 1975 – 2001 and has since established his studio in Red Deer. Westergard is a highly regarded printmaker who is also an elected member of the Royal Society of Painter-Printmakers, United Kingdom. This trompe l'oeil drawing, *Bag With A View*, is a coloured pencil drawing that uses subtle shadows cast by the bag to increase the sense of illusion. The drawing uses subtle tricks to play with facial features behind the bag cutouts and Westergard's control of technique and the rendering of tonal transitions using hatching are masterful.

James Abbott McNeill Whistler {1834-1903}

Black Lion Wharf

1859

Etching

James Abbott McNeill Whistler was an American-born, British-based painter and printmaker, perhaps best known for his iconic painting titled *Arrangement in Grey and Black No.1*, or as its more commonly known, *Whistler's Mother*. Whistler often found parallels between paintings and music and would use nomenclature common in music lexicon to inform the titles of his work. In addition to being a painter, Whistler was also known for his prints and considered a master of etching. *Black Lion Wharf* is an etching from the Thames River Series.



DEC 2013





In Celebration of

The Lieutenant Governor of Alberta Distinguished Artist Awards

ROOTED
· IN THE ·
Arts



THE
LIEUTENANT
GOVERNOR
OF ALBERTA
distinguished
ARTIST AWARDS